



# **Quarter Note**

**Ta**

**1 Beat**



# **Half Note**

**Ta - 2**

**2 Beats**



# **Eighth Notes**

**Ta - ti**

**2 Eighth Notes = 1 Beat**

J.

# **Dotted Half Note**

**Ta - 2 - 3**

**3 Beats**





# **Whole Note**

**Ta - 2 - 3 - 4**

**4 Beats**



# **Quarter Rest**

**Rest**

**1 Beat Silence**



# **Whole Rest**

**Rest for a Whole Measure**



# **Half Rest**

**Rest - 2**

**2 Beats Silence**



*Adagio*

**Slow**

*Andante*

# Walking Tempo

*Moderato*

**Moderately**

*Allegro*

**Fast**



*pp*

**pianissimo**

**Very Quiet**

*p*

**piano**

**Quiet**

*mp*

**mezzo piano**

**Medium Quiet**

*mf*

**mezzo forte**

**Medium Loud**



*f*

**forte**

**Loud**

*ff*

**fortissimo**

**Very Loud**



**Middle C**

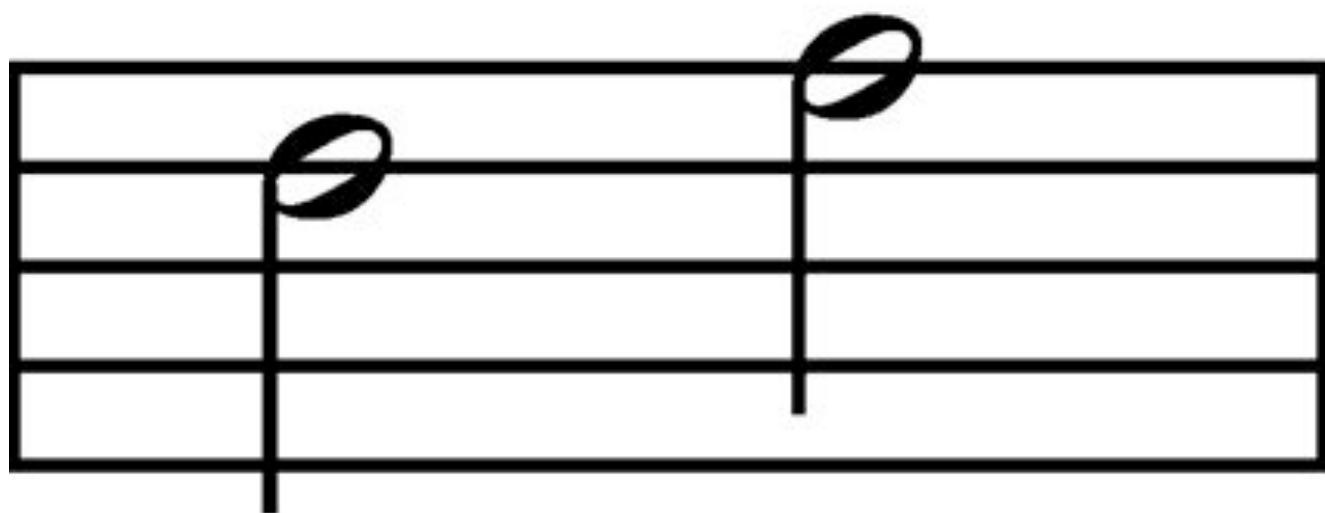


**Melodic 2nd**

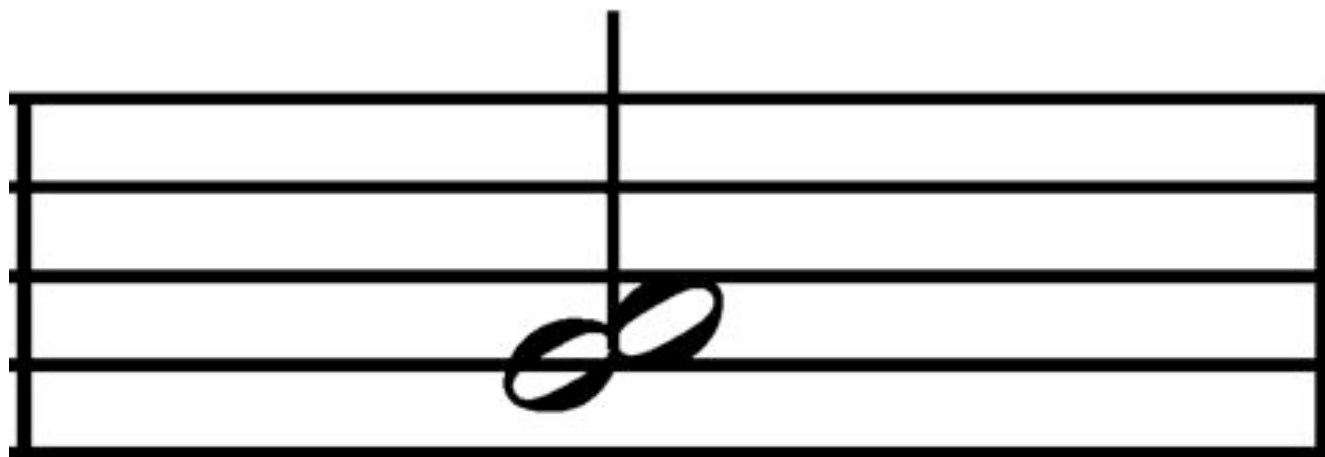




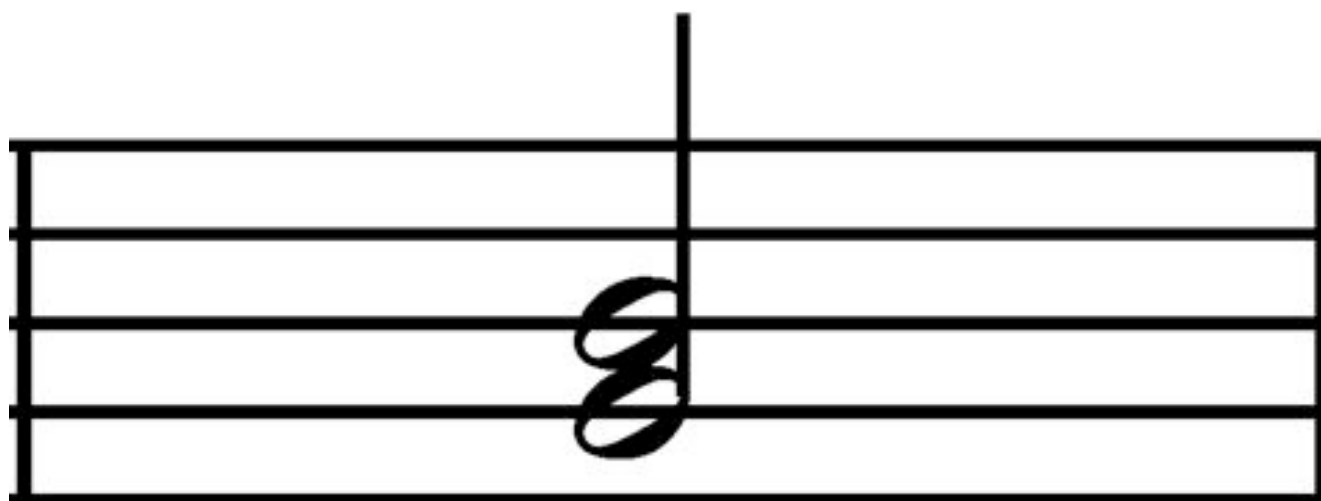
**Melodic 3rd**



**Melodic 3rd**



**Harmonic 2nd**



**Harmonic 3rd**





**Harmonic 3rd**

**2**  
**4**

**3**  
**4**

**4**  
**4**

# **Time Signature**

**Top Number: Beats in a measure**

**Bottom Number: What kind of  
note equals 1 beat**



**staccato**

**Short**



**legato**

**Slur**

**Connected**



*Allegretto*

**A little fast**

*Cantabile*

**In a singing manner**



*crescendo*

*cresc.*

**Play gradually louder**



*diminuendo*

*dim.*

**Play gradually quieter**



# **Skips Alphabet**

**F A C E G B D**

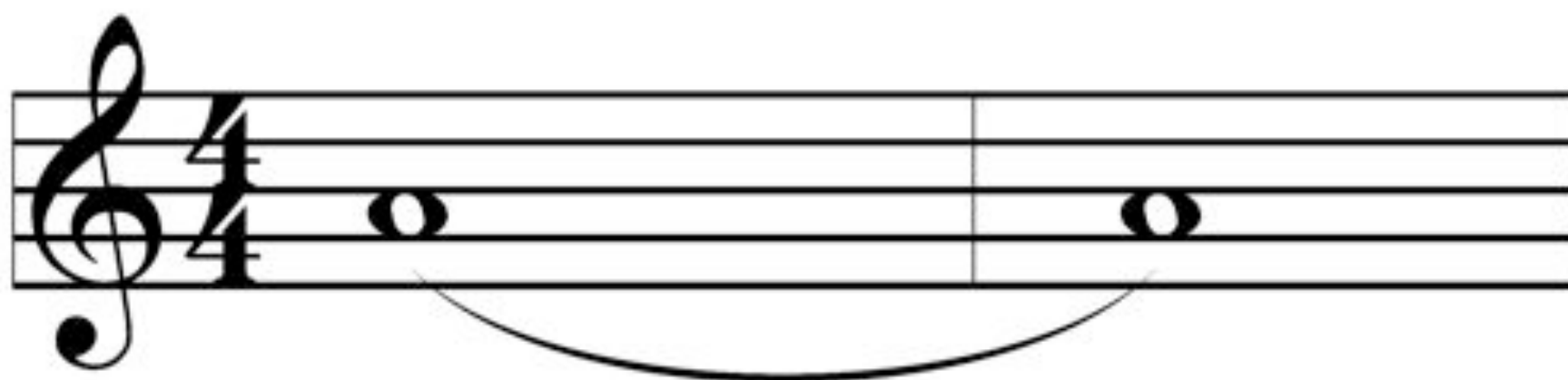
**Begin Skips**  
**Alphabet on G**

F A C E **G B D** F A C E **G B D**



# **Anacrusis Upbeat**

**An incomplete measure at  
the beginning of the piece**

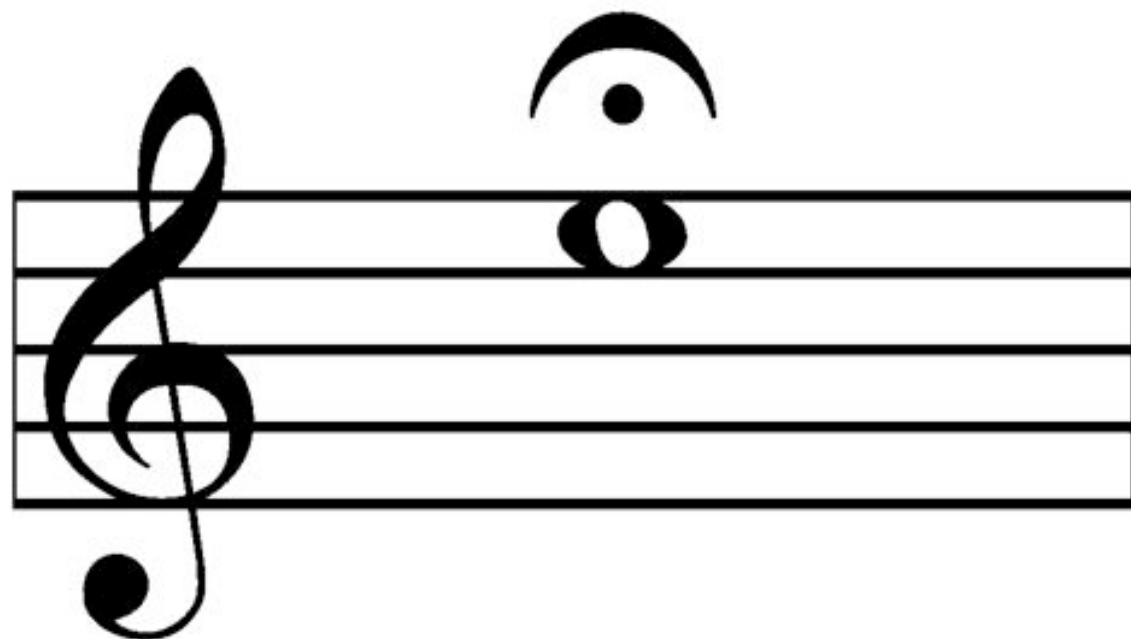


# **Tie**

**Connects two notes that are the same.**

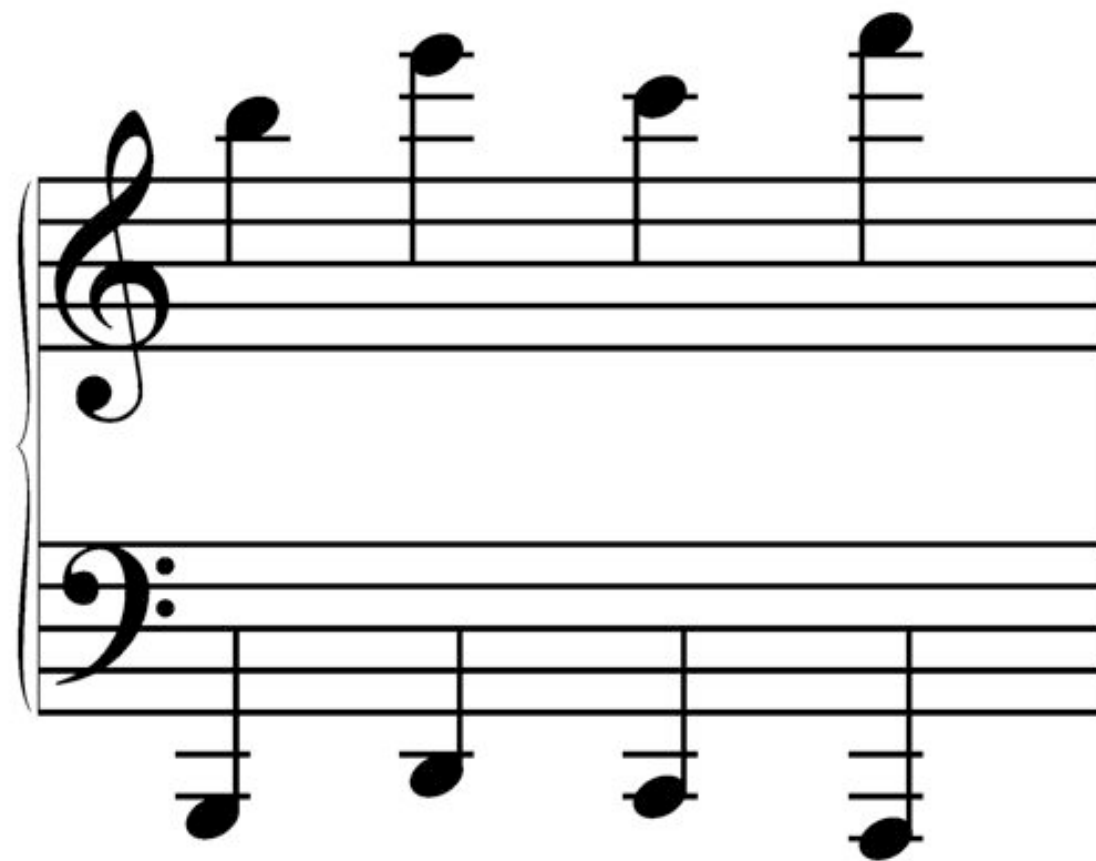
**Hold for the combined value of the notes.**





# **Fermata**

**Hold a note longer than its value**



# **Leger Lines**

**Added lines that extend the staff**

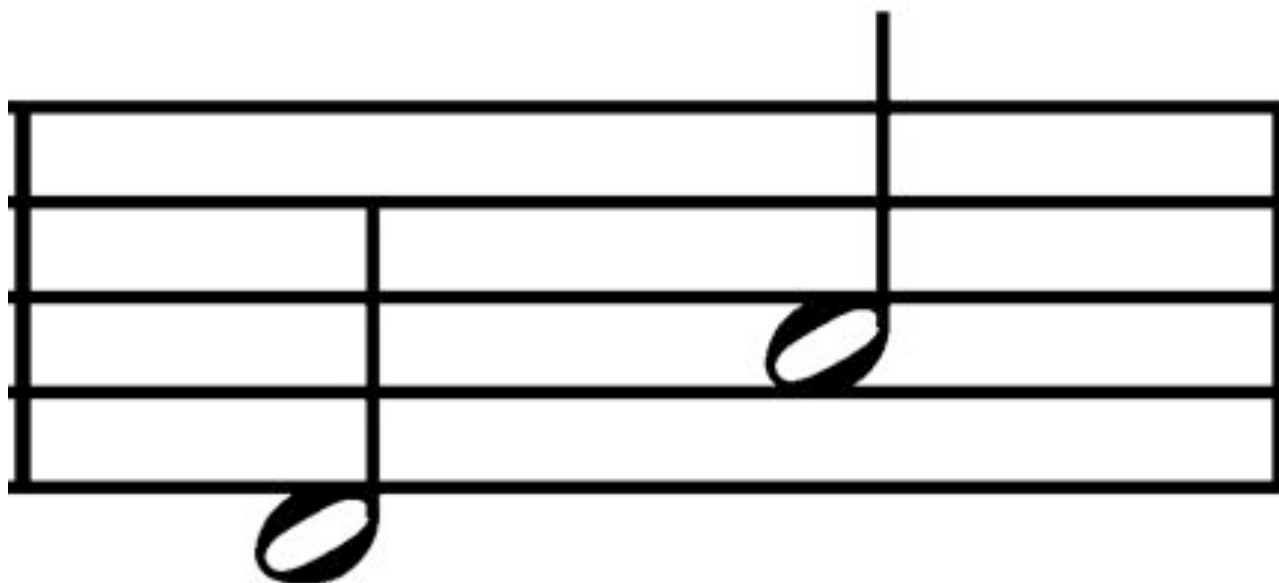


**Melodic 5th**



**Harmonic 5th**





**Melodic 5th**



**Harmonic 5th**



# **Sharp**

**Raises a note a half step.**

**Lasts through the whole measure.**



# **Flat**

**Lowers a note a half step.**

**Lasts through the whole measure.**





# **Accent**

**Play the note with more sound**



# **Natural**

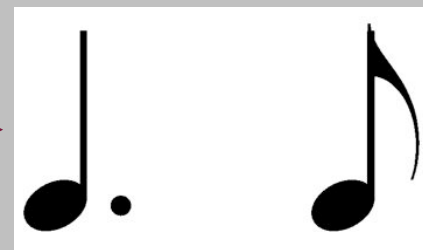
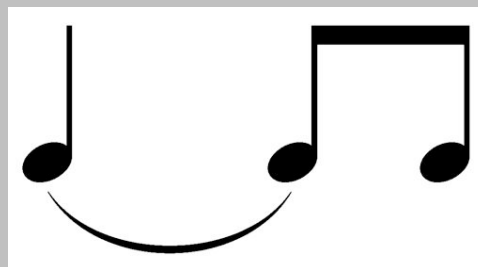
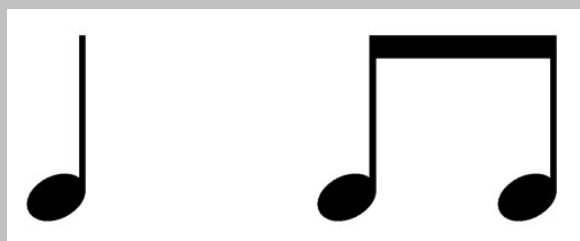
**Cancels the flat or sharp in a measure**





Ta - ah - ti

1 + 2 +



*dolce*

**Sweetly**





# **Syncopated Pedal**



**Melodic 4th**



**Harmonic 4th**