



Quarter Note

Ta

1 Beat



Half Note

Ta - 2

2 Beats



Eighth Notes

Ta - ti

2 Eighth Notes = 1 Beat

2

3

4

Bar Line

Double
Bar Line



Measure



Measure



Repeat Sign

Play it again.

Allegro

Fast

Moderato

Moderately



Whole Note

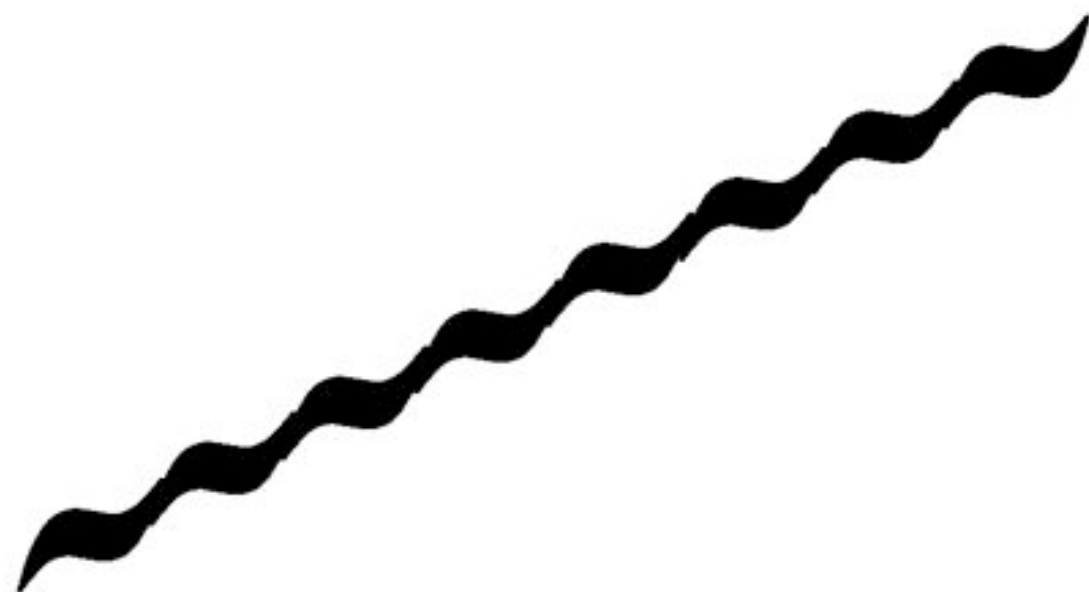
Ta - 2 - 3 - 4

4 Beats

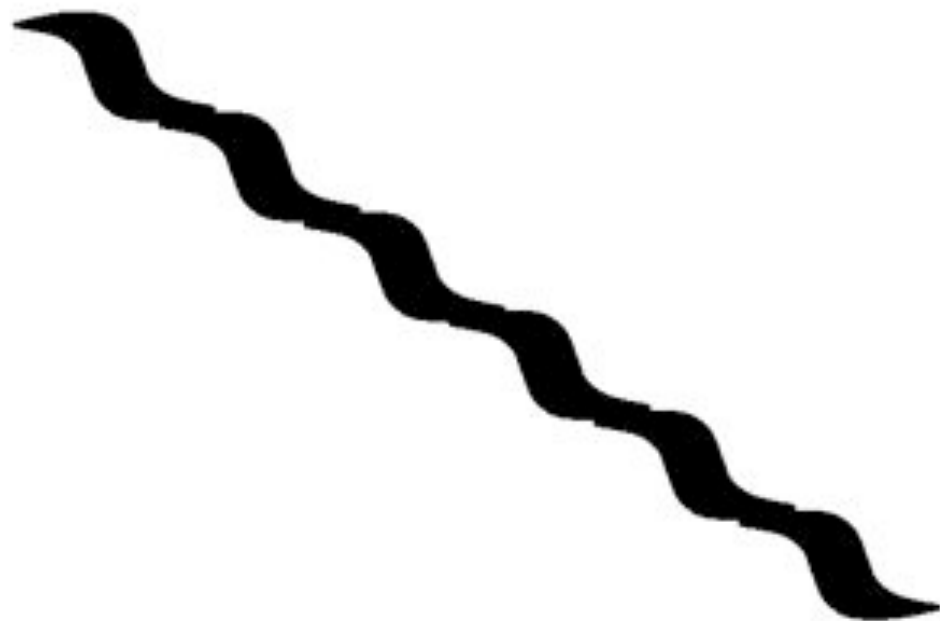
p

piano

Quiet



Glissando up



Glissando down





















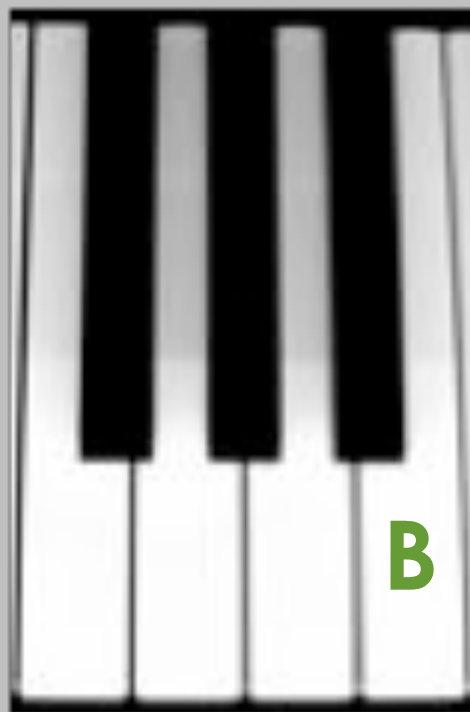


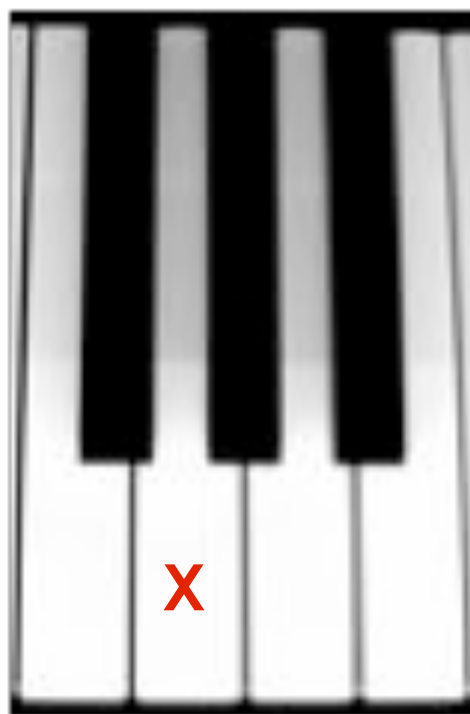












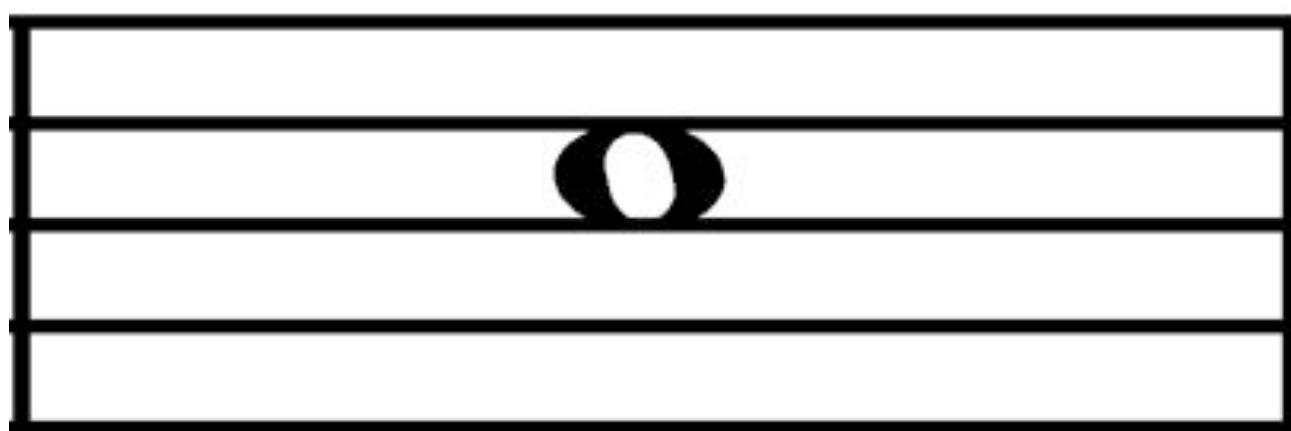


ritardando

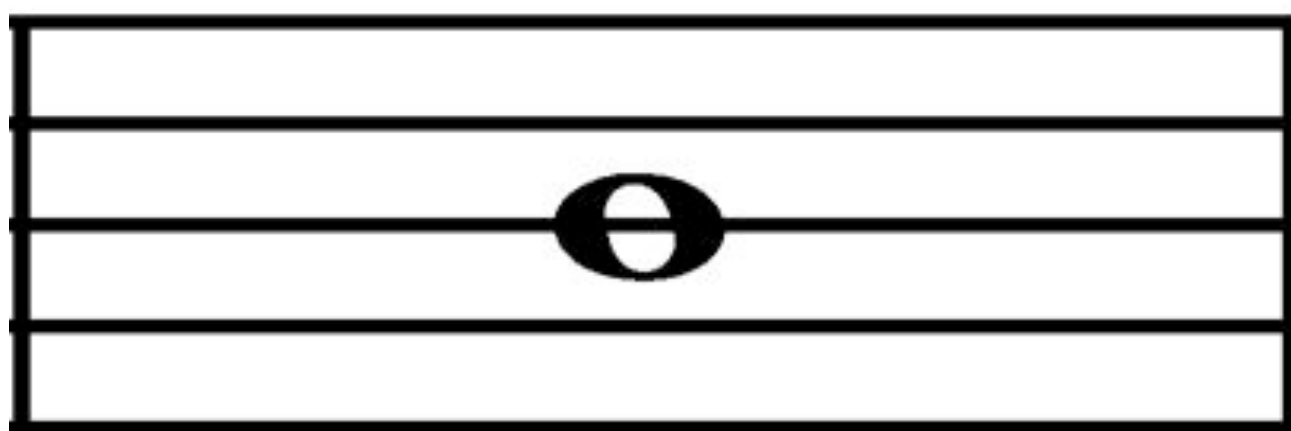
rit.

Gradually slowing down

Staff



Space Note



Line Note



Treble Clef

Note in upper range

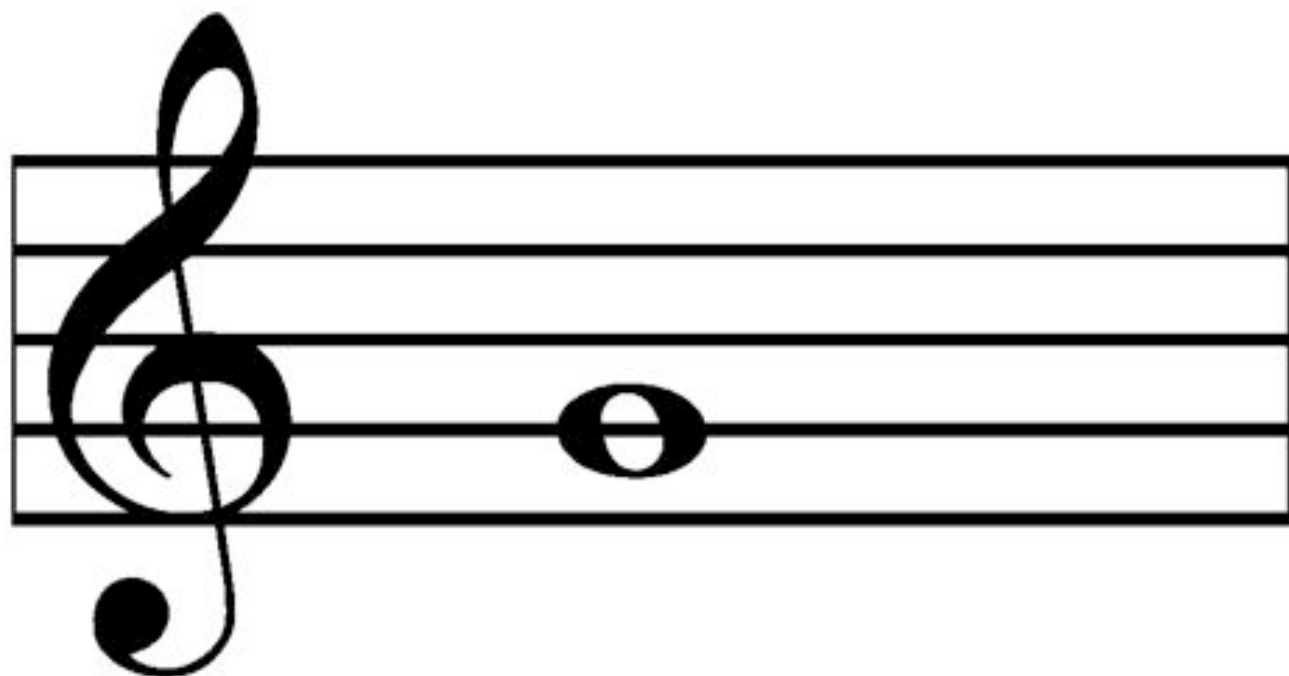
Usually RH



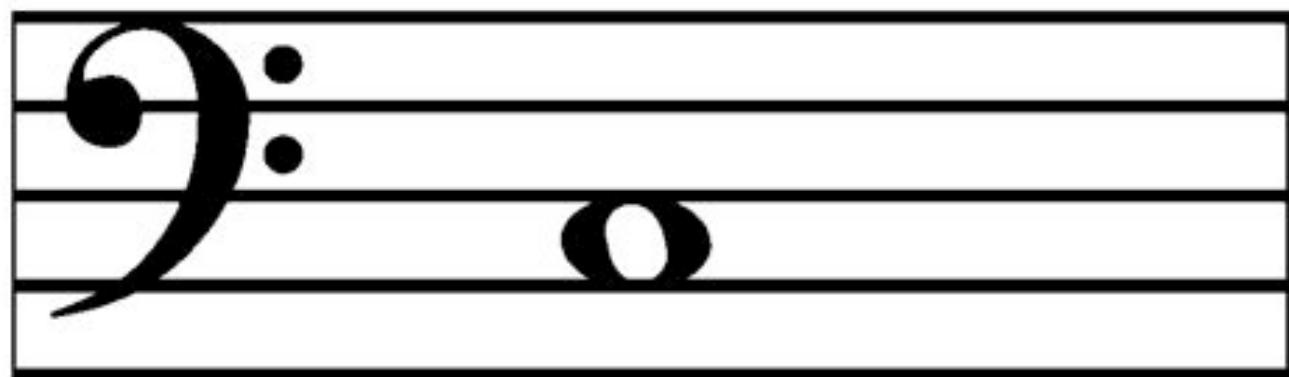
Bass Clef

Note in lower range

Usually LH



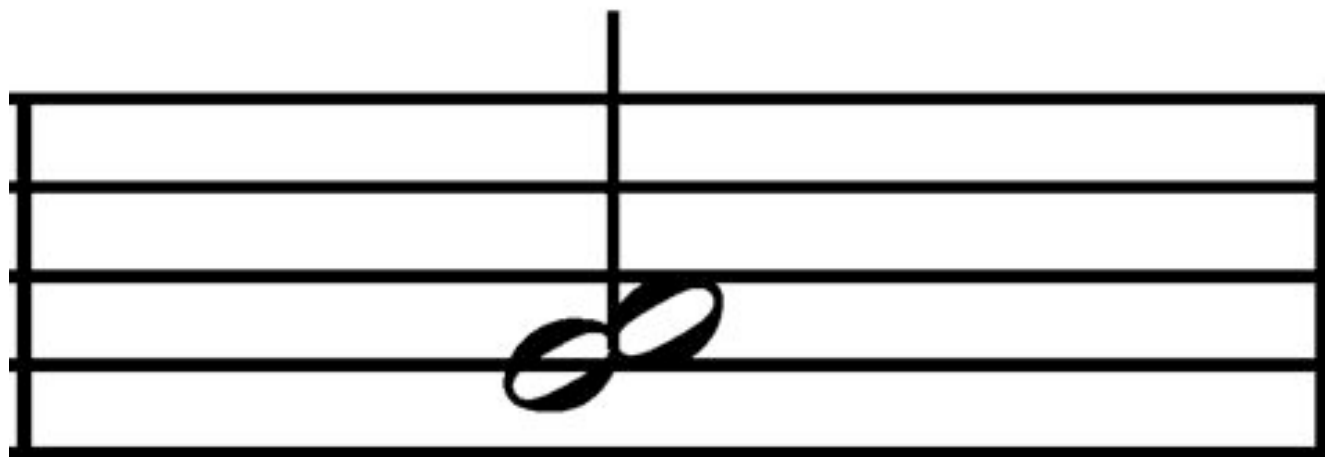
Treble G



Bass C



Melodic 2nd



Harmonic 2nd

mf

mezzo forte

Medium Loud

8va 15ma

8va

Play one octave higher than written

15ma

Play two octaves higher than written

8vb 15mb

8vb

Play one octave lower than written

15mb

Play two octaves lower than written

Andante

Walking Tempo

non legato

Not connected

D.C. al Fine

**Go back to the
beginning and end at
the *Fine***



Whole Rest

Rest for a Whole Measure



Quarter Rest

Rest

1 Beat Silence



Dotted Half Note

Ta - 2 - 3

3 Beats



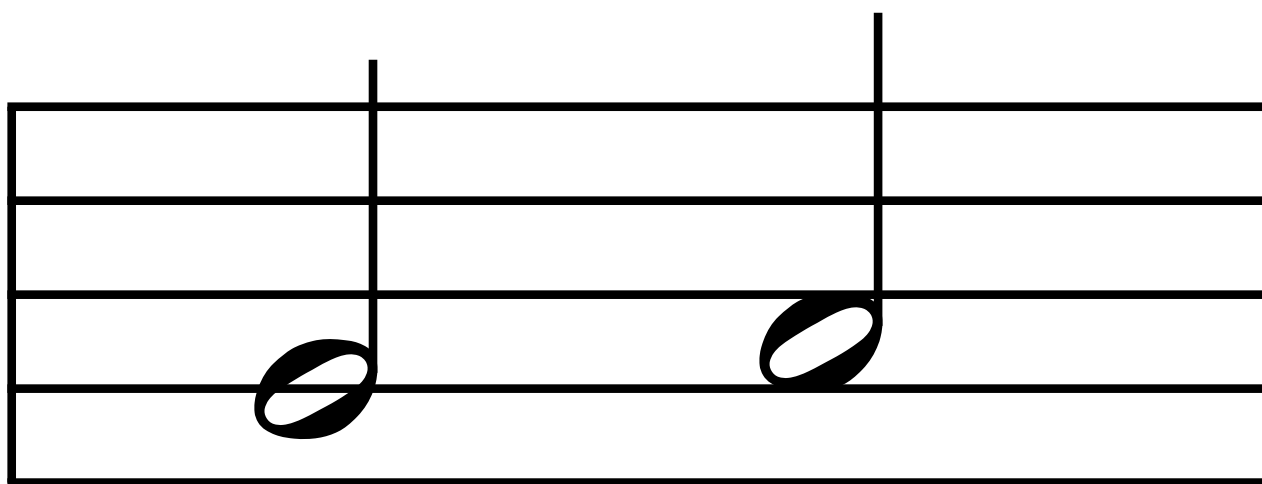
Pedal Mark



legato

Phrase

Connected



Melodic 2nd



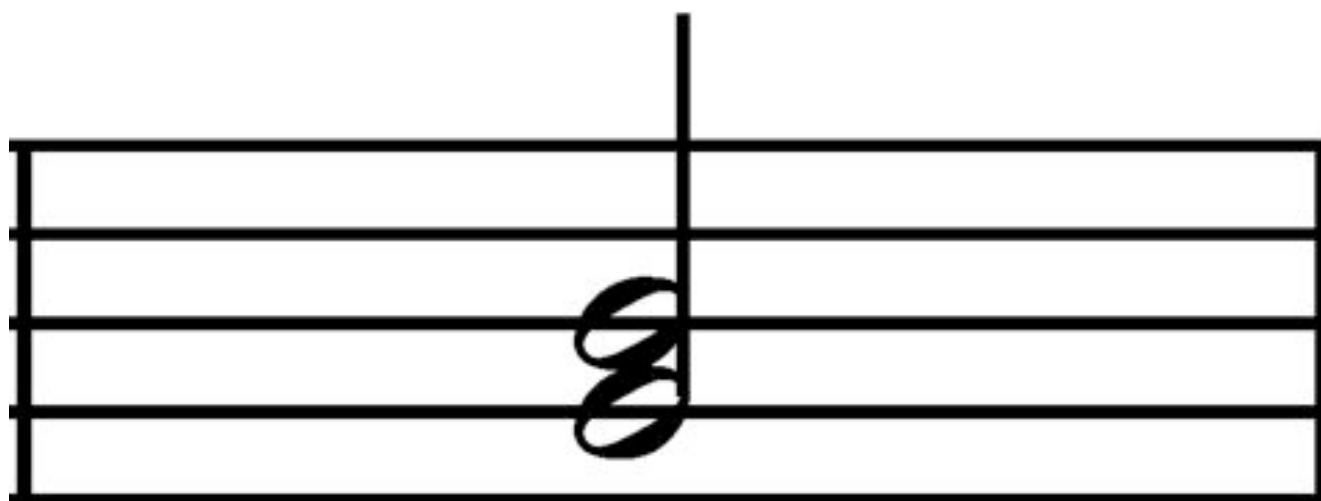
Melodic 3rd



Harmonic 3rd



Melodic 3rd



Harmonic 3rd

Adagio

Slow



Half Rest

Rest - 2

2 Beats Silence

f

forte

Loud

mp

mezzo piano

Medium Quiet



Slur

legato

ff

fortissimo

Very Loud